

# Möbelbezugsstoff Biba

100% Polyester

150 cm | 220 g/m<sup>2</sup> | 4330699

10 m Coupons



Der Bezugsstoff besitzt eine Abriebfestigkeit von 75.000 Zyklen



**Scheffer & Wiggers GmbH**

Alfred-Mozer-Straße 40

48527 Nordhorn

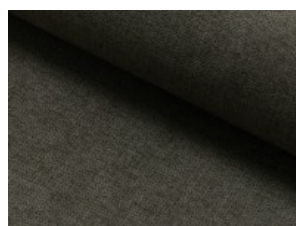
[www.s-w-stoffe.com](http://www.s-w-stoffe.com)



01 natur



02 helloliv



03 braun



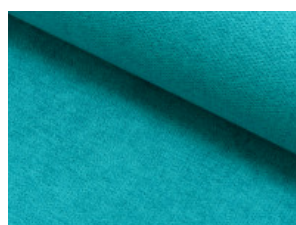
04 rehbraun



06 dunkelbraun



10 ocker



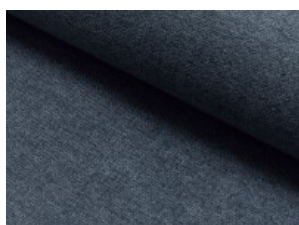
11 türkis



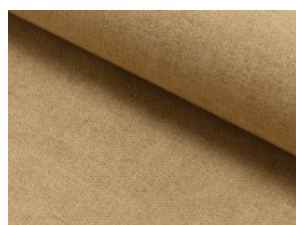
12 silbergrau



13 schwarz



14 mittelgrau



15 camel



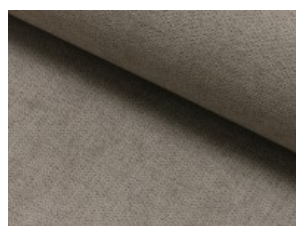
18 mint



19 altrosé



20 hellgrau



21 taupe



22 pflaume



23 grau



76 jeansblau