

# Möbelbezugsstoff Biba

100% Polyester

150 cm | 220 g/m<sup>2</sup> | 6718699

10 m Coupons



Der Bezugsstoff besitzt eine Abriebfestigkeit von 75.000 Zyklen



**Scheffer & Wiggers GmbH**

Alfred-Mozer-Straße 40

48527 Nordhorn

[www.s-w-stoffe.com](http://www.s-w-stoffe.com)



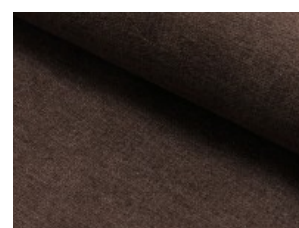
01 natur



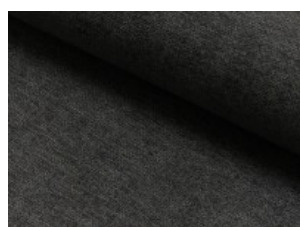
02 helloliv



03 braun



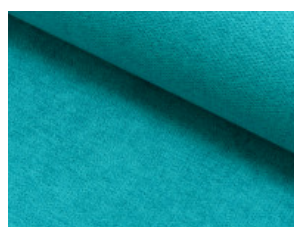
04 rehbraun



06 dunkelbraun



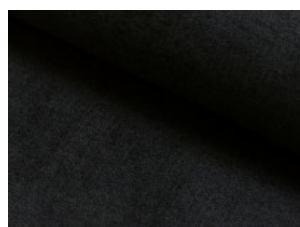
10 ocker



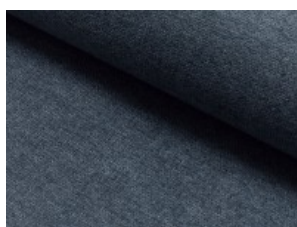
11 türkis



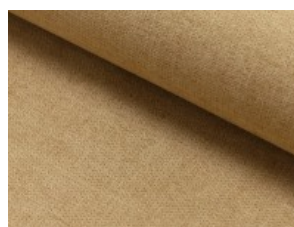
12 silbergrau



13 schwarz



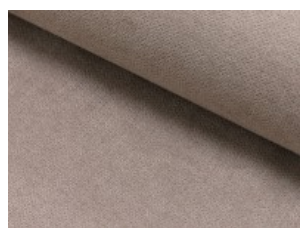
14 mittelgrau



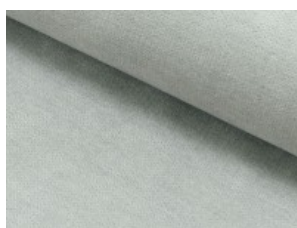
15 camel



18 mint



19 altrosé



20 hellgrau



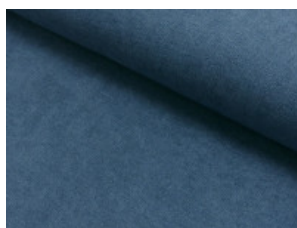
21 taupe



22 pflaume



23 grau



76 jeansblau